

TANKLESS WATER HEATER VALVE KITS

PRODUCT FEATURES:

- Full port to minimize turbulence
- 3/4-in NPT & PEX connections
- Individually controlled drain outlets
- Pressure relief valve has a stainless steel handle for quick & easy operations
- 200,000 BTU / hour rating on pressure relief valve
- Compatible with most Tankless Water Heaters
- Hot/Cold Valve Maximum Pressure: 600 PSI
- Temperature Range: 32°F to 180°F
- PRV Working Pressure: 150 PSI

COLOR CODED HANDLES

Red (hot) and Blue (cold) for easy visual identification. Quarter-turn for quick, efficient on/off flow control.

LEAD-FREE FORGED BRASS

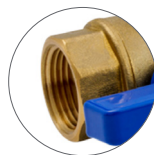
Supports a durable long-lived product



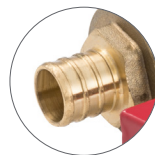
CAP CONNECTORS

Rubber connectors prevent caps from being lost during maintenance

AVAILABLE CONNECTION TYPES:



NPT
Ideal for connecting to iron pipe systems



F1807 PEX
Ideal for connecting primarily to PEX tube types B and C



F1960 PEX
Designed to connect to only PEX A tubing



PART NO	DESCRIPTION	BX QTY	MC QTY
TANKLESS WATER HEATER KIT			
102-120	TANKLESS WATER HEATER KIT W/ PRV - NPT	-	16
102-130	TANKLESS WATER HEATER KIT W/ PRV - F1807 PEX	-	16
102-140	TANKLESS WATER HEATER KIT W/ PRV - F1960 PEX	-	16

APPLICABLE CERTIFICATIONS:

